

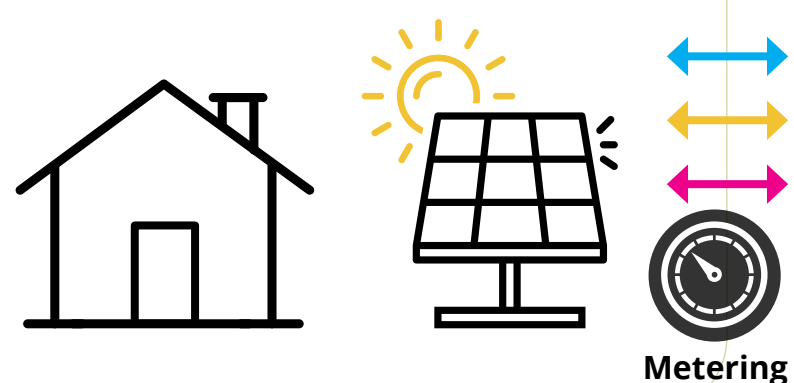
PROSUMER BUSINESS MODELS



PROSEU
prosumers for the energy transition

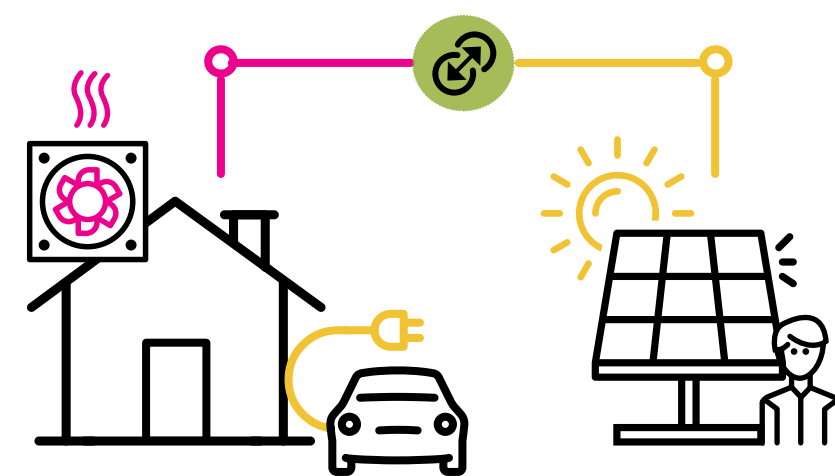
BASIC PROSUMER

Basic self consumption: Household produces electricity and consumes it. Potentially sells some but also buys. Benefit: Save money, use renewables.



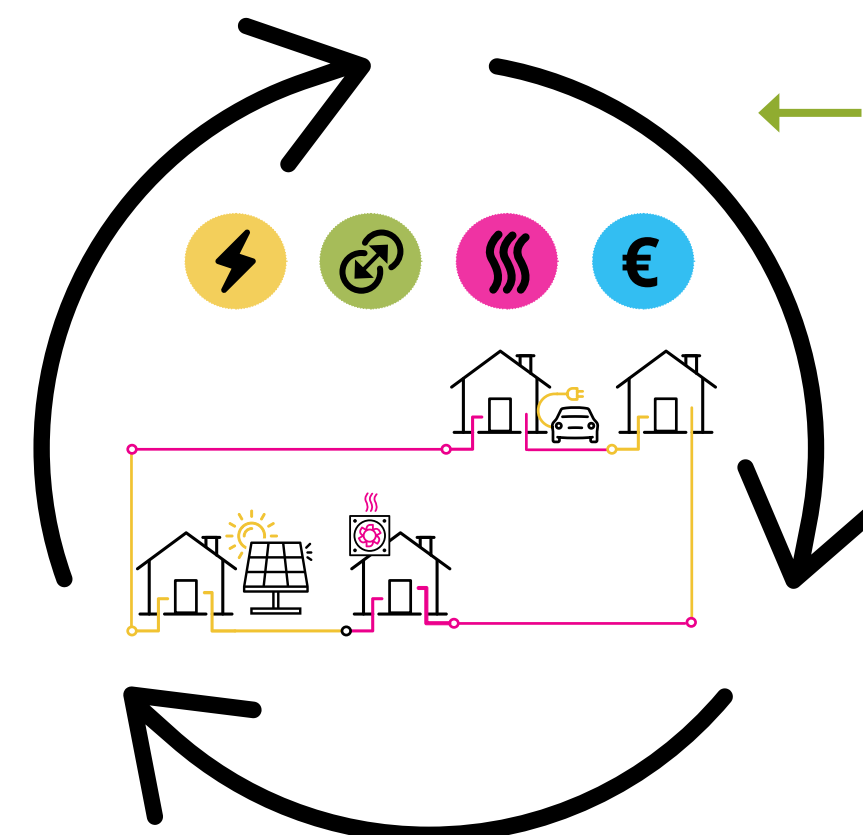
SECTOR COUPLING IN THE HOME

Self consumption with the ability to do sector coupling internally.

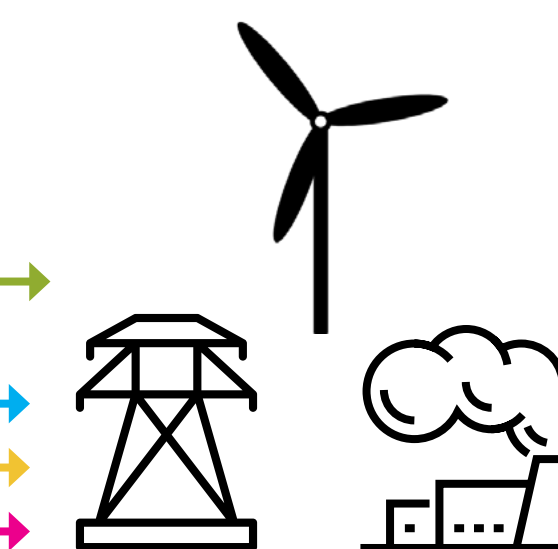


BALANCING OF THE WIDER ENERGY SYSTEM

The combination of production and sector coupling in a wider community allows for providing flexibility to the entire grid. This provides added value for the green transition.

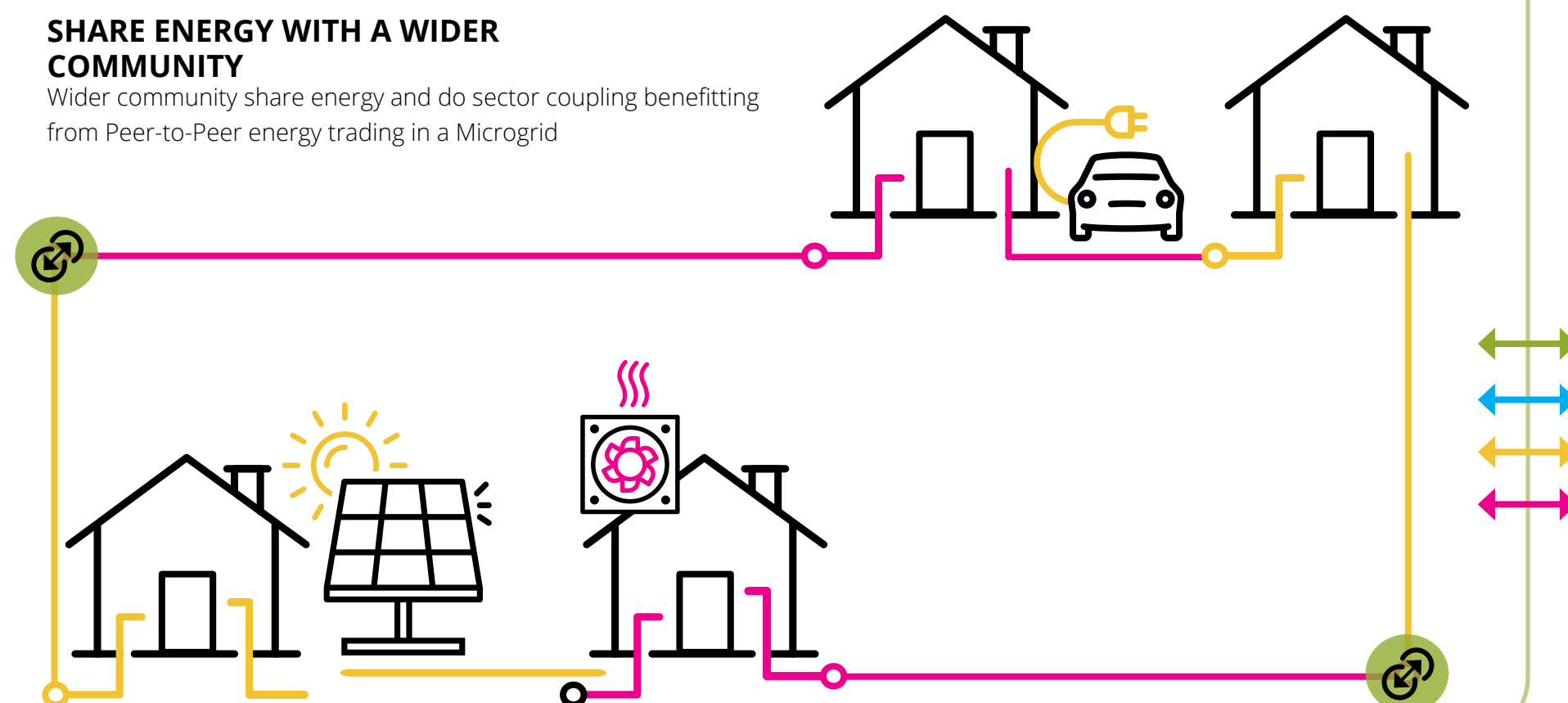






CURRENT MARKET



SHARE ENERGY WITH A WIDER COMMUNITY

Wider community share energy and do sector coupling benefiting from Peer-to-Peer energy trading in a Microgrid



-  Electricity
-  Payments
-  Heat
-  Grid Flexibility

This infographic is a simplification. Find 15 detailed business models on proseu.eu/business

Infographic by the PROSEU project

 This project has received funding from the EU's Horizon 2020 research and innovation programme under grant agreement N°764056. Opinions are those of PROSEU and do not necessarily represent those of the EU.